

Optional Items



Pass-through
Door Switch Module



Air Compressor Unit



Fume Extraction System



SmartGUARD™ Fire
Alarm (Patented)

Specification		S290LS-20SHS	S290LS-20JFL	S290LS-30JFL	S290LS-50JFL	S290LS-60JFL
Laser Source		Fiber 20W		Fiber 30W	Fiber 50W	Fiber 60W
Wavelength		1064 nm				
Laser M2		<1.3	<1.3	<1.3	<1.8	<1.8
Laser Peak Power (kW)		>7	>4.5	>5.5	>8	>7.8
Work Area		25 x 18 in. (640 x 460 mm) extendable to 29 x 18 in. (740 x 460 mm)				
Max. Part Size (L x W x H)	All doors closed	31.5 x 22.4 x 6.5 in. (800 x 570 x 165 mm)				
	All doors open	31.5 x ∞ x 6.5 in. (800 x ∞ x 165 mm)				
Table Size		31.1 x 20.9 in. (790 x 530 mm)				
Dimensions		44.3 x 28.3 x 39.6 in. (1125 x 720 x 1005 mm)				
Cooling		Air Cool				
Drive		Closed-loop DC Servo Control				
Maximum Speed*		80 IPS				
Speed Control		Adjustable from 0.1~100% (Up to 16 color-linked speed settings per job)				
Power Control		Adjustable from 0~100% (Up to 16 color-linked power settings per job)				
Engraving Capability		256-level gray scale image processing capability				
Distance Accuracy		0.254 mm or 0.1% of move, whichever is greater				
Z-Axis Movement		Automatic				
Resolution (DPI)		Available 125, 250, 300, 380, 500, 600, 760, 1000, 1500, 3000				
Interface		10 Base-T Ethernet USB Type-A 2.0 – For USB storage (Max. 32GB capacity, FAT file system) USB Type-B 2.0 – For connecting with the computer				
Display Panel		4-line LCD panel showing current file name, total working time, laser power, engraving speed, file(s) loaded into memory buffer, setup and diagnostic menus				
Safety		Class I Laser Product Compliant with EN60825 Class 3R Laser Product Compliant with CDRH 2006/42/EC Machine Directive Compliance Class 4 Laser Product Compliant with CDRH with the optional pass-through door module				
Operation Voltage		100V-240VAC, 50/60Hz Auto switching, MAX. 8A				
Fume Extraction System		External exhaust system with minimum flow rate 640m ³ /h (CFM 377 ft ³ /min) is required, 2.3kPa negative pressure (Pure-Air PA-1000FS @ 4" exhaust port)				

* Speed is not equal to throughput. See dealer or visit www.laserproi.com for more details.

△ Specifications are subject to change without prior notice.

***Please use certified brands by GCC for LaserPro USB storage, kindly refer to GCC User Manuals Authorized Dealer for more details.



www.GCCworld.com

GCC
LaserPro

Laser Engraver

GCC LaserPro S290 LS

Flat Bed Fiber Laser System with Large Working Area



S290 LS

- Spacious 29" x 18" working area
- Closed-loop DC servo control for precise and rapid movement
- Superior image engraving quality
- Environment friendly fiber laser technology for metal and plastic engraving
- Patented AutoFocus design to find precise focus with one button
- Easy to use MS Windows based driver interface



GCC Headquarters 4F-1., No.236, Fude 2nd Rd., Xizhi Dist., New Taipei City 22151, Taiwan 886-2-6616-6692 Fax : 886-2-2694-6875
 GCC China No.1, Chen Feng Road, Yushan, Kunshan, Jiangsu 215300, China 86-512-5726-1515 Fax : 86-512-5726-1518
 GCC Europe B.V. Eglantierbaan 43-45, 2908 LV, Capelle a/d IJssel, The Netherlands 31-10-458-9367
 GCC America, Inc 20453 E Valley Blvd. Walnut, CA 91789, USA 1-909-718-0248 Fax : 1-909-718-0251
 US & Canada Only Toll Free: 1-888-284-5211



Phone Marking

Plastic Marking

Metal Marking

Bar Code Marking

PET Card

Jewelry Marking

Laser Engraver

GCC LaserPro S290 LS

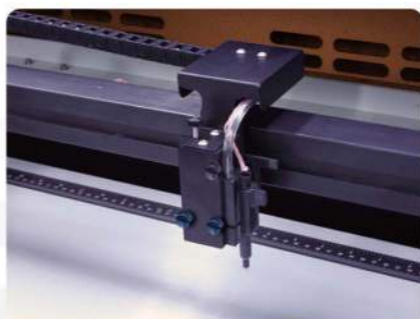


GCC LaserPro S290 LS

A full table size production marker, GCC LaserPro delivers an easy to operate fiber laser marking system which yields spectacular marking results. The S290 LS is a marking specialist engineered for performance and produces excellent output quality. Whether it is a graphic on metallic surfaces, markings on plastic surfaces, or simply barcodes on metal tools, the S290 LS produces the finest markings. Furthermore, innovative features developed from LaserPro's years of experience makes the S290 LS the most user-friendly system on the market.

Drag-N-Play

The "Drag-N-Play" feature greatly reduces complex set up procedures and allows users to directly drag the lens carriage to the starting point of a job.



DuraGuide

Systematic and reliable motion system embedded with strong mechanical framework, reinforced Kevlar belts, and accurate servomotor control technology to deliver superb output quality under rapid movement.

Pass-through Front and Rear Doors (Optional)

Optional front and rear door design enables loading of extremely long working pieces.



SmartLID™ (Patented)

An innovative lid that opens from both ends allowing easier access for daily maintenance.

SmartACT™ (Patented)

Ground-breaking technology that reduces the ramping process, the job running time, which translates into higher productivity.

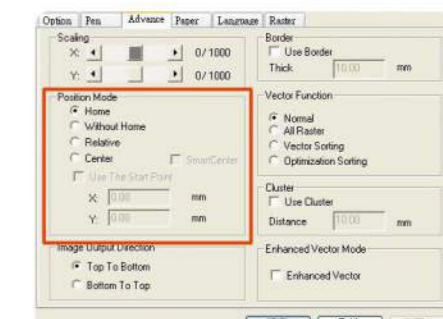


SmartCENTER™ (Patented)

The super user-friendly SmartCENTER™ function helps end users to easily and automatically locate the center point of objects of any shape vastly eliminating tedious setup time.

Easy-to-use Control Panel

A user-friendly menu-driven interface system simplifies complex tasks. Hot keys design and job status display facilitates your work and makes it clear and easy to carry out.



Programmable Origin Modes

Easy to use position modes allow the operator an effortless way to setup a job. Repetitive workflows can be drastically simplified by relocating the origin position to any desired location.