



rss

removable
smooth **surface**

by decal

application manual

rss

removable smooth surface

by decal

application manual

Decal s Removable Smooth Surface (RSS) range combines the properties of **permanent and removable adhesive products** in Sign Graphics printing and laminations (indoor and outdoor).

In order for the result to be perfect, **it is necessary to take some precautions**, that is why we have developed this application manual in which we **clarify any doubts** that arise throughout the entire process.

Consult the information provided - **from storage to removal of materials** - and ensure maximum effectiveness in visual communication on **non-porous, flat and slightly curved surfaces**.

1 how to store it?

The **maximum storage time** for Removable Smooth Surface (RSS) products is **12 months**, only applicable to **unprocessed materials** and whenever the **following conditions** are met:

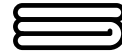
- temperature between $20^{\circ}\text{C} \pm 5^{\circ}\text{C}$ and $50 \pm 5\%$ relative humidity (no high climatic deviations)
- Dry and clean space
- keeping it away from heat sources and direct sunlight
- Use of the original packaging to protect against dust and contamination - Vertical storage

2 what materials do I need?

preparation



soft brush



cloths

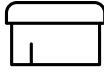


cleaning product
(degreaser)

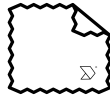
application



measuring tape



spatula



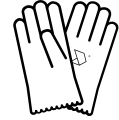
felt
(to cover the spatula)



cutter

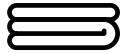


adhesive tape



gloves
(must be of cotton for
applications on glazed
surfaces)

removal



cloths



cleaning product
(for the removal of the residues
left by the adhesive)

3 which are the previous steps to follow?

We start by recommending that our products remain at least **24 hours at room temperature where they will be applied**. In the moments before the application, **check the following factors**:

- Characteristics of each substrate Completely clean and dry surface
- Cleaning the rollers to remove dust or residues that may have accumulated during storage and/or transport
- In the case of laminations, respect the drying time of the inks, which varies from 24h to 48h depending on the printing technology used
- Whenever possible, perform a pre-test in a place that is not very visible

4 how to apply?

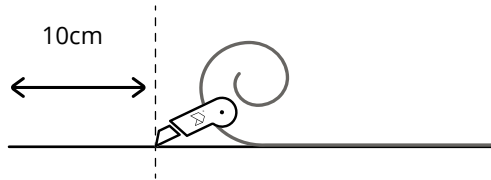


Attention

do not apply with water

RSS Adhesive Films must be **applied dry**, as the initial repositionable tack (glue force) is designed to be applied without water, allowing you **to easily reposition the material and remove air bubbles**. The **glue strength evolves within 24 hours after application**, until it reaches the tack of a **permanent product** and maintains the characteristic of a **removable product without residues**. If **applied with water**, the RSS adhesive becomes permanent and leaves a residue upon removal.

4.1. smooth and flat surfaces



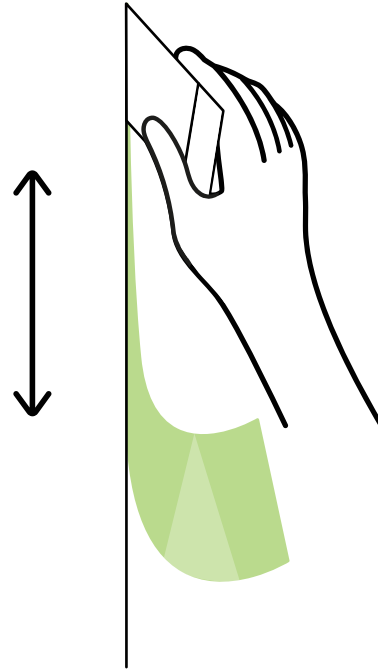
1 peel off and pull the liner about 10cm

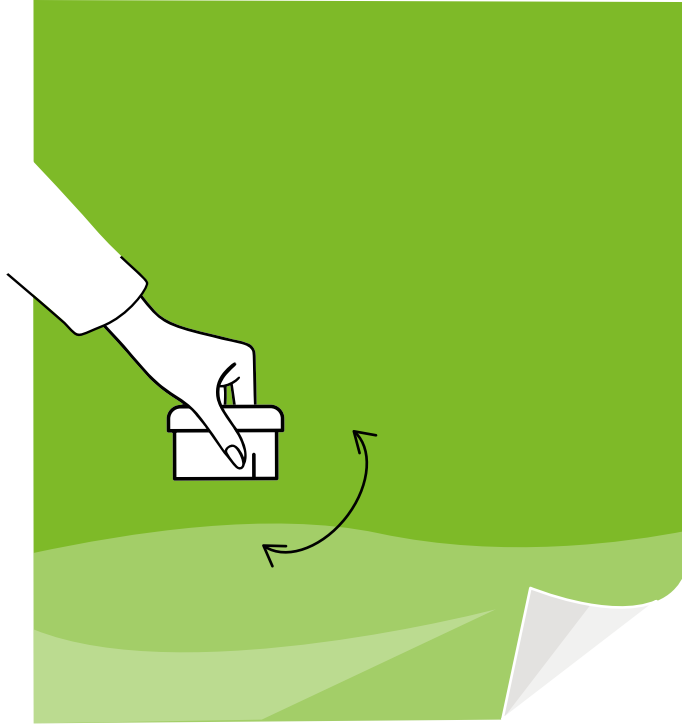


2 place the first strip of film **on top of the surface** (make sure it is in the correct position so as not to compromise the application of the following strips)



- 3** apply the film from top to bottom with a felt-lined spatula, forming a **45° angle** between both surfaces





- 4** remove the liner in strips **from 50 to 70cm** and adhere it, **imitating the movement of a fan**, from the center to the ends

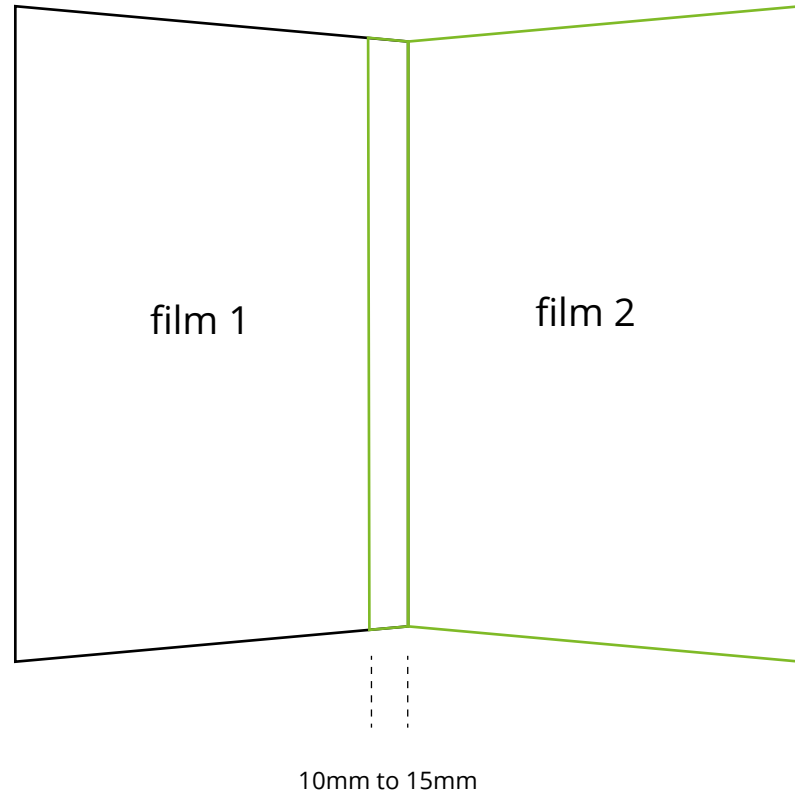
- 5** For corner applications, start by following the procedures outlined above

- 6** Apply the film to the first surface with a **10mm to 15mm overlap** on the adjacent surface

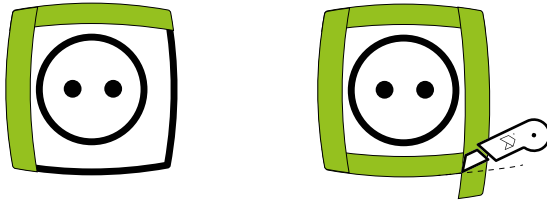
7 place the **second film on the second surface**, continuing to the edge

7.1 on surfaces with different heights, join them **by applying the second film over the first with an overlap of about 1cm**

8 **cut the second film** along the first and remove the excess



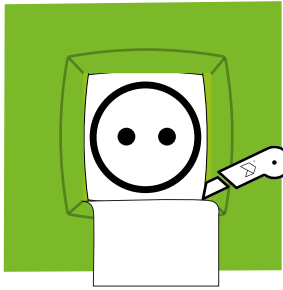
4.2. surfaces with fixed elements



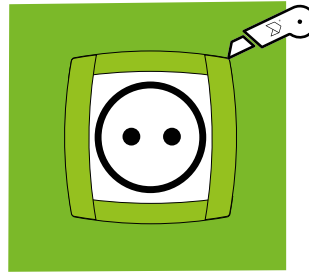
1 place adhesive tape over the edges of the fixed element



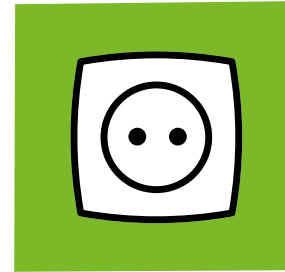
2 in the case of electrical outlets, apply the film over the box



3 cut the film to allow a 5mm overlap

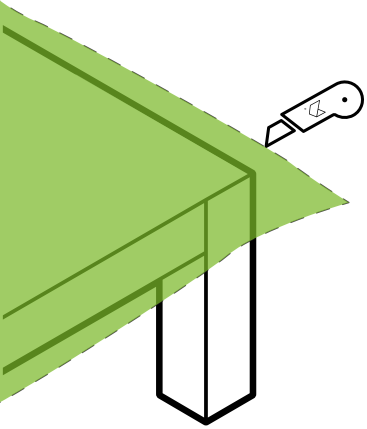


4 use the spatula covered with felt to guide the cutter when **cutting the film around the edges**

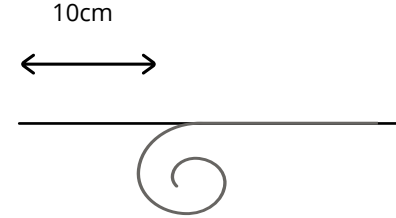


5 remove the excess

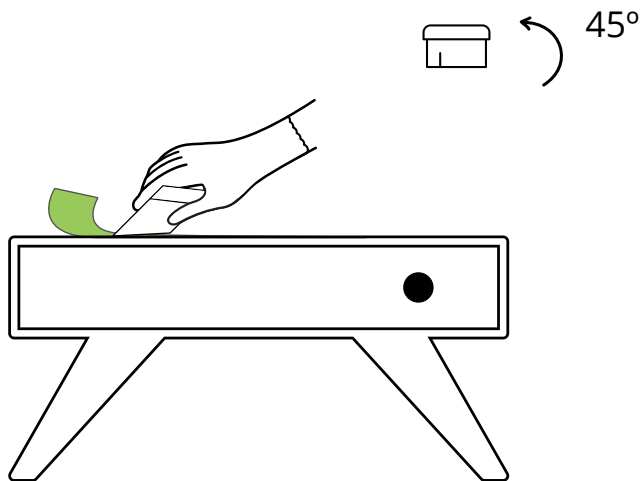
4.3. furniture



- 1** cut the film larger than the surface to cover the portion that will be folded over the edge

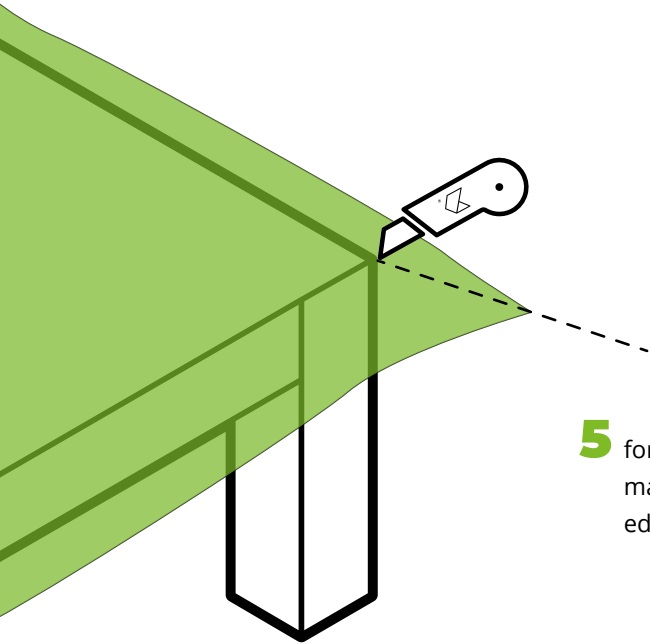


- 2** peel off and pull the liner about 10cm, starting the application from the corners

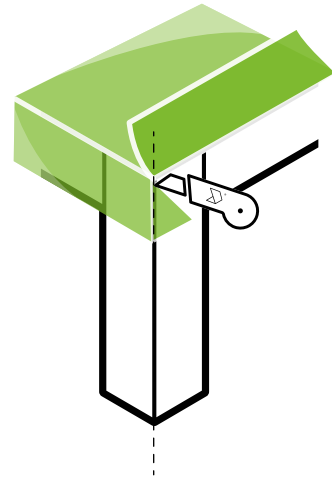


3 apply the film from the middle to the ends with a spatula covered with felt, forming a 45° angle between both surfaces

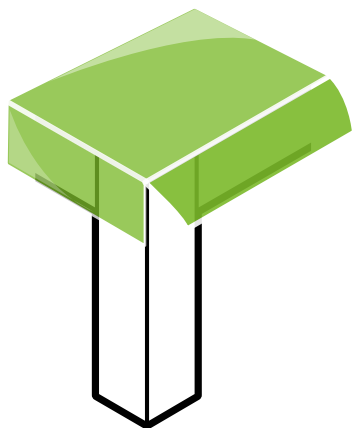
4 on the horizontal surface, gradually **remove the liner**, following the instructions in steps 2 and 3



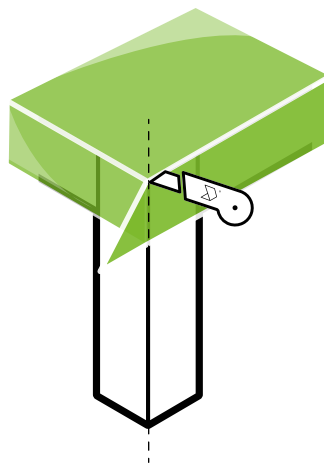
5 for corner applications, start by making a **diagonal cut** from the edge



6 **fold the film** over the edge of the corner



- 7** **cut the excess film**, leaving 1mm to 2mm from the edge, and cover the adjacent edge



- 8** **apply the film** to the second edge and cover the corner with a slight overlap of the films

- 9** if the furniture structure allows it, fold 1 to 2cm of the film under the horizontal part

5 how to remove?

Whenever the substrate allows it, the removal process must be done **using heat**. Similar to the application of films, we recommend **carrying out a pre-test** on a less visible part of the surface.

- 1** on substrates that allow removal with heat, **heat the film** with a hot air gun, starting at a corner, **not exceeding a temperature of 60°C** (laser thermometer)
- 2** lift the corner with the cutter and remove the heated film, which should form a **180° angle** with the surface
- 3** **removal should be done gradually**, heating small areas in a controlled manner to minimize residues, paying special attention to the angle and speed of traction
- 4** if necessary, clean the surface with a **cloth soaked in a product suitable for removing adhesive residues**



 **Portugal**

Torres Novas . Lisbon . Famalicão

+351 249 819 160

decal@decal.pt

 **Spain**

Madrid . Barcelona . Bilbao

+34 916 658 642

marketing@decal.pt

 **Germany**

Cologne

+49 176 200 022 03

joergen.walch@decal-adhesive.de

Headquarters and factory

Zona Industrial, Lote 1, Casal Torteiro
2350-483 Torres Novas

39°27'34.1"N 8°32'44.1"W

[See all decal's contacts on our website](#)



www.decal-adhesive.com

